



FA01624-EN

CE

FC

EAC




PLX A

USER MANUAL

General precautions

- Read the instructions carefully before beginning the installation and carry out the procedures as specified by the manufacturer.
- The product must be installed, programmed, commissioned and serviced by qualified technicians, correctly trained with regard to respecting the regulations in force, including implementing accident-prevention measures.
- Before carrying out any cleaning or maintenance operation, disconnect the power supply.
- The equipment must only be used for the purpose for which it was designed.
- The manufacturer declines all liability for any damage as a result of improper, incorrect or unreasonable use.
- The product, in its original packaging supplied by the manufacturer, must only be transported in a closed environment (railway carriage, containers, closed vehicles).
- If the product malfunctions, stop using it and contact customer services at <https://www.came.com/global/en/contact-us> or via the telephone number on the website.

 The manufacture date is provided in the production batch printed on the product label. If necessary, contact us at <https://www.came.com/global/en/contact-us>.

 The general conditions of sale are given in the official CAME price lists.

Function of buttons

Press this button to activate and deactivate communication.

To send a PANIC SIGNAL to the porter (where present), press and hold the button for more than 2 seconds.

The white LED will light up to confirm that the PANIC SIGNAL has been received by the porter.



 The white LED stays on until the porter calls the user back.

 The PANIC SIGNAL takes priority over all other types of call.

LED key 

Flashing: call in progress

On: PANIC SIGNAL in progress (no receiver communication)



Press this button to adjust the ringtone volume: LOW, MEDIUM, HIGH, OFF.

LED key red

On: the volume is off.

Press the button during a conversation to adjust the audio volume.



Auxiliary 2 / Porter call.

This signals a request to be called back by the porter.



This button sends a DOOR RELEASE or GATE RELEASE command. To send a GATE RELEASE command to the porter (where the function is enabled), press and hold the button for more than 3 seconds.

LED key

Flashing: calling

On: gate/door open, if correctly configured.

The door status function is active by default. The GATE RELEASE function must be correctly configured.

1

The function of this button depends on the configuration set during installation. If the button is configured as an INTERCOM, it will serve as INTERCOM 1.

If the SECOND FUNCTION is also activated using button 4, it will serve as INTERCOM 4.

If the button is configured as an AUX, it will serve as AUX 1.

2

The function of this button depends on the configuration set during installation.

If the button is configured as an INTERCOM, it will serve as INTERCOM 2.

If the SECOND FUNCTION is also activated using button 4, it will serve as INTERCOM 5.

If the button is configured as an AUX, it will serve as AUX 3.

3

The function of this button depends on the configuration set during installation.

If the button is configured as an INTERCOM, it will serve as INTERCOM 3.

If the SECOND FUNCTION is also activated using button 4, it will serve as INTERCOM 6.

If the button is configured as an AUX, it will serve as AUX 4.

The function of this button depends on the configuration set during installation. If the button is configured as an INTERCOM, it will temporarily enable the SECOND FUNCTION, allowing INTERCOM calls 4 to 6 to be activated.

☞ When the second function is active, the white LEDs on the buttons 1,2,3,4 will flash. The function remains active for approximately 10 seconds and can be disabled by pressing the button again.

4

If the button is configured as an AUX, it will serve as AUX 5.

To enable and disable the AUTOMATIC DOOR RELEASE function, press and hold the button for more than 3 seconds.

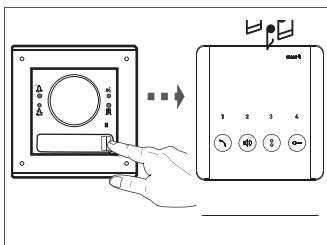
☞ This function is available only when the line is free.

LED key

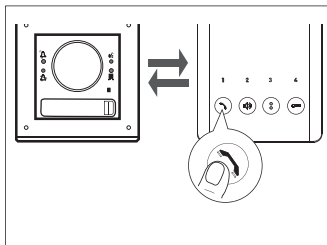
On: AUTOMATIC DOOR RELEASE function enabled.

Off: AUTOMATIC DOOR RELEASE function disabled.

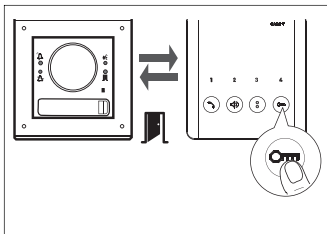
Standard functions



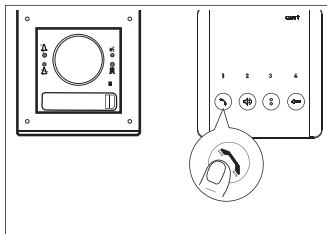
Call in progress.



Answer a call.

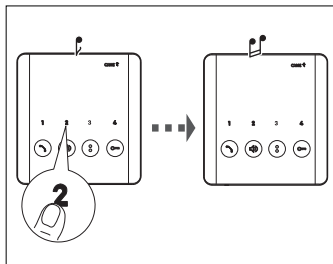


Communication activated.
Open the door for the calling entry panel.



End the call.

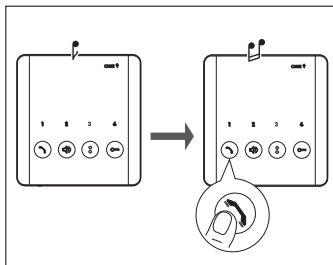
Intercommunication



Press the button to select the desired internal receiver.

The calling receiver will sound to indicate that the line is free.

The called receiver will ring with the chosen ringtone.

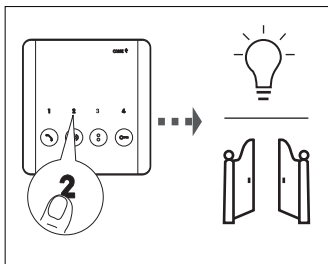


Press this button on the called receiver to activate audio communication.

👉 During a conversation between internal receivers, a call from an entry panel is signalled on the internal receivers by a beep that repeats every 5 seconds.

👉 When trying to make an intercom call, 3 consecutive beeps indicate that the line is busy and the call cannot be made.

Auxiliary controls

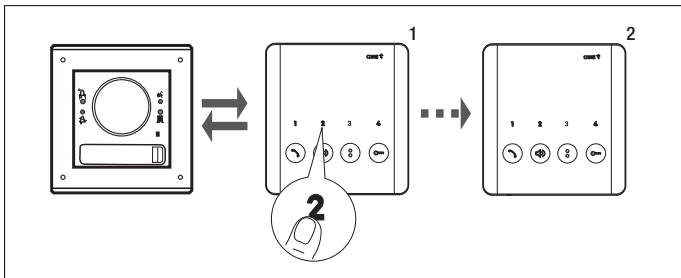


Press the AUX button to activate the desired auxiliary command.

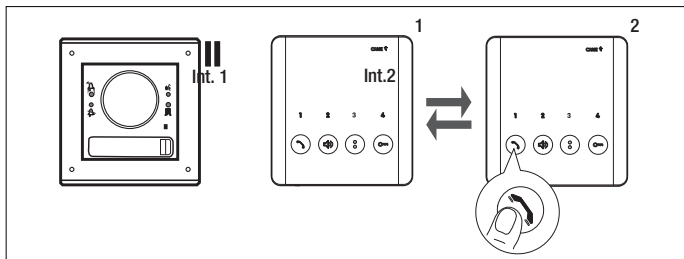
Example switching on a light or opening the gate.

👉 Accessory devices may be required for these commands to work properly.

Call forwarding

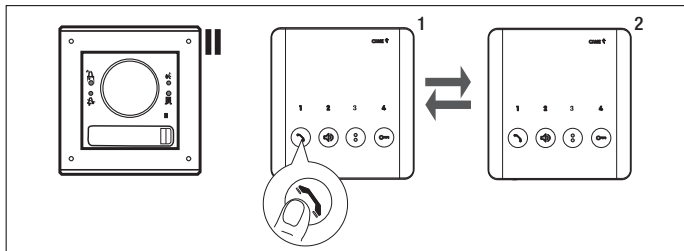


With a call active, select the internal receiver to which you want to transfer the call.

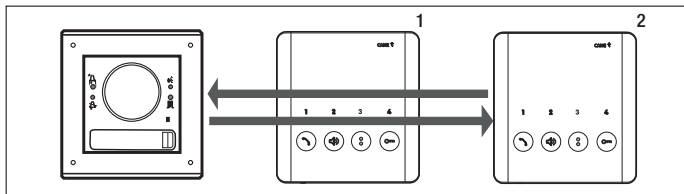


To activate audio communication between two internal receivers, press this button on the called receiver.

The entry panel will be put on hold.



To allow internal receiver 2 to communicate with the entry panel, press this button on internal receiver 1.

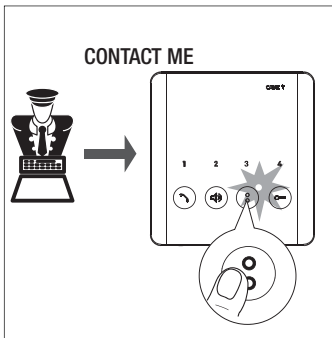


Internal receiver 2 will be able to communicate with the entry panel.

 The internal receiver with the incoming call can transfer it.

Porter functions

These functions are only available if the system has a porter desk.

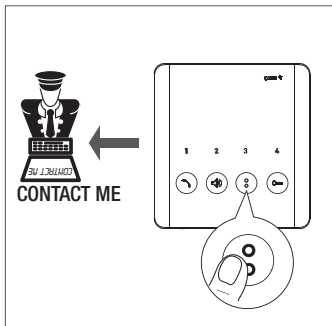


Call notification from the porter



When this button LED lights up, this means the porter would like to be called back.

The LED turns off when communication with the porter starts.

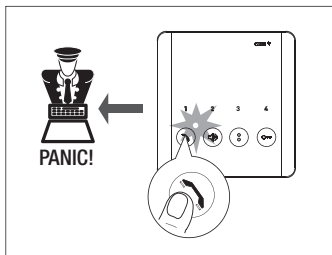


Request to be called back by the porter



Press this button to send a call request signal to the porter.

The system must be correctly configured.

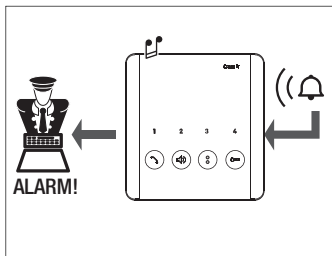


Sending a panic signal to the porter



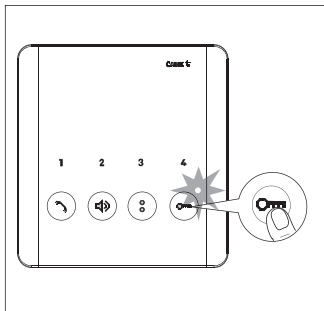
Press and hold this button for 2 seconds to send a PANIC signal to the porter.

The white LED indicates that the signal has been received by the porter.



Alarm signal

If an alarm contact connected to the relevant receiver entrance is activated, a signal is sent to the porter and an intermittent acoustic signal sounds on the receiver.



Open-gate function/status

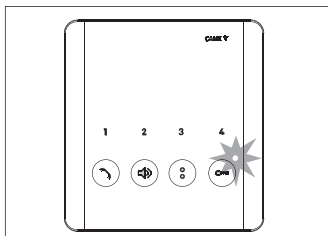


Press and hold the button for a prolonged period to send an open/close command to an operator. The LED indicates the status of the operator.

☞ The system must be correctly set up and configured.

☞ The function must be activated on the receiver when the call is being associated during system programming.

Door status function

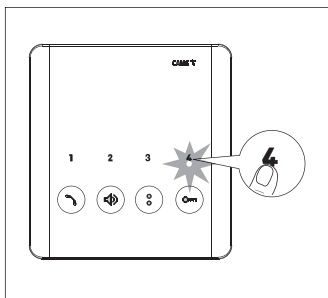


The LED next to this button indicates the current door status.

☞ The system must be correctly set up.

☞ The function is active during the steps that involve communicating with the entry panel and the signal refers to the entrance associated with the entry panel.

Automatic door-release function



4

This function allows you to automatically open the entrance when you press the call button on the entry panel.

This function is useful for professional practices.

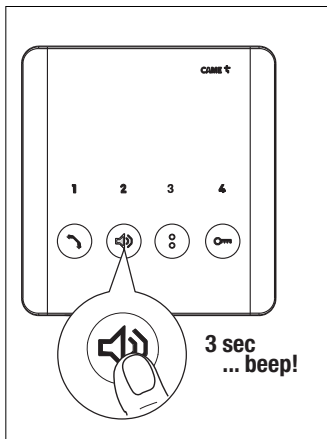
Press and hold this button for more than 3 seconds to enable/disable the function.

☞ The LED switches on to indicate that the function has been enabled.

☞ The call ends automatically.

Configuring melodies

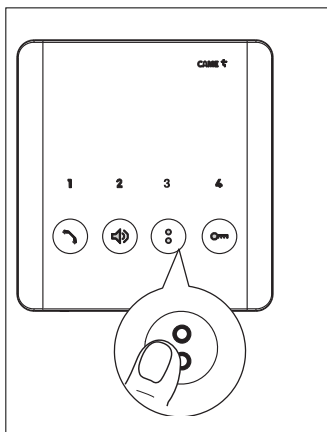
☞ Perform each of the following configuration steps, in succession:



Entering configuration mode



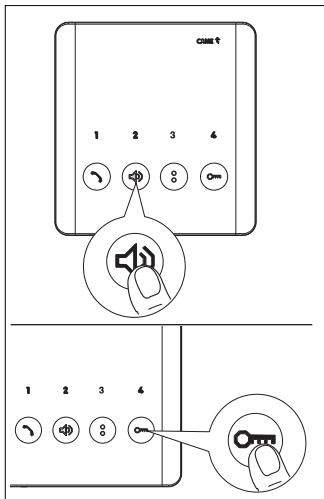
Press and hold the button for 3 seconds. A short buzzing sound and a red flashing LED confirm that you have entered configuration mode.



Configuration the melody associated with a call from the entry panel



Press this button to listen to the melodies in sequence.

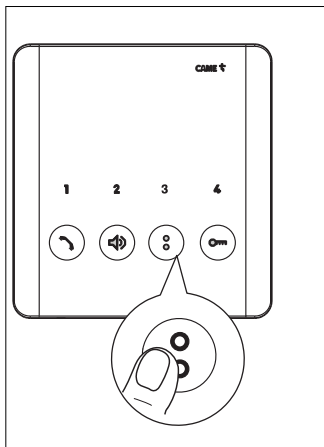


Press this button to select the melody and exit configuration.



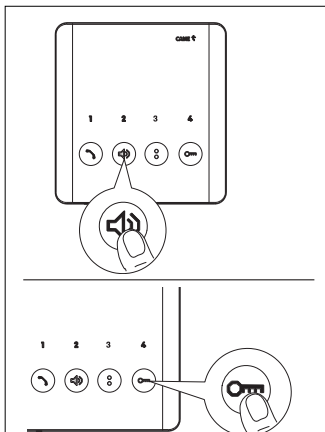
Press this button to select the melody and continue configuration.

☞ You will hear two short beeps to confirm that you have entered landing-call configuration mode



Press this button to listen to the melodies in sequence.


Configuration the melody associated with a call from the landing.

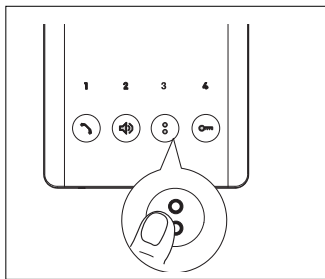


Press this button to select the melody and exit configuration.



Press this button to select the melody and continue configuration.

 You will hear three short beeps to confirm that you have entered configuration mode for the number of rings per call.

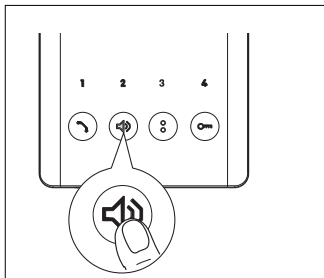


Configuration the number of rings per call.



Press this button as many times as the number of rings you want (from 1 to 12 rings).

Three seconds after the key was last pressed, the selected call is played back with the chosen number of rings.



Press this button to exit configuration.

Technical data

Type	PLX A
Power supply from BUS (V DC)	15 to 20
Consumption in stand-by mode (mA)	<1
Maximum consumption (mA)	30
Single LED consumption (mA)	1
Storage temperature (°C)*	-25 to +70
Operating temperature (°C)	+5 to +40
IP Rating	IP 30
Average life (hours)**	150,000

(*) Before installing the product, keep it at room temperature where it has previously been stored or transported at a very high or very low temperature.

(**) The average product life is a purely indicative estimate. It applies to compliant usage, installation and maintenance conditions. It is also influenced by other factors, such as climatic and environmental conditions.

Legislative references

This product complies with the applicable standards in force at the time of manufacturing.

FCC - This device complies with part 15 of the FCC Rules.

Operation is subject to the following two conditions:

(1) this device may not cause harmful interference / (2) this device must accept any interference received, including interference that may cause undesired operation.

Cleaning the device

To clean the device, use a soft, slightly damp cloth only. Wet the cloth with water or an ammonia solution. Alternatively, use an oil-based soap (e.g. Marseille soap) or a gentle makeup remover (e.g. a cleanser or micellar water).

Always wipe the surface with a damp cloth (wet with just water) after cleaning. Never use alcohol-based solutions or solutions containing surfactants.

Dismantling and disposal. Dispose of the packaging and the device responsibly at the end of its life cycle, in compliance with the laws in force in the country where the product is used. The recyclable components are marked with a symbol and the material ID marker.

THESE INSTRUCTIONS MUST BE SUPPLIED WITH THE DEVICE. THE DATA AND INFORMATION CONTAINED IN THEM ARE TO BE CONSIDERED AS SUBJECT TO CHANGE AT ANY TIME AND WITHOUT THE NEED FOR ANY ADVANCE WARNING.

