



## Video intercom with handset



**AGT V**

**AGT V BF**

**OPERATING AND INSTALLATION MANUAL**

**FA01620-EN**

**CE**

**EAC**

**FC**

## General precautions

Read the instructions carefully before beginning the installation and carry out the procedures as specified by the manufacturer. • The installation, programming, commissioning and maintenance of the product must only be carried out by technicians who are qualified and properly trained in compliance with the regulations in force, including as regards health and safety, and disposal of packaging. • Before carrying out any cleaning or maintenance, disconnect the device from the power supply. • Only use this product for its intended purpose. Any other use is hazardous. • Came S.p.A. is not liable for any damage caused by improper, erroneous or unreasonable use. • The product, in its original packaging supplied by the manufacturer, must only be transported in a closed environment (railway carriage, containers, closed vehicles). • If the product malfunctions, stop using it and contact customer services at <https://www.came.com/global/en/contact-us> or via the telephone number on the website.



**The manufacture date is provided in the production batch printed on the product label. If necessary, contact us at <https://www.came.com/global/en/contact-us>.**



**The general conditions of sale are given in the official CAME price lists.**

### Legislative references

This product complies with the applicable standards in force at the time of manufacturing.

This device complies with part 15 of the FCC Rules.

Operation is subject to the following two conditions: (1) this device may not cause harmful interference / ((2) this device must accept any interference received, including interference that may cause undesired operation.

### Cleaning the device

To clean the device, use a soft, slightly damp cloth only. Wet the cloth with water or an ammonia solution. Alternatively, use an oil-based soap (e.g. Marseille soap) or a gentle makeup remover (e.g. a cleanser or micellar water).

Always wipe the surface with a damp cloth (wet with just water) after cleaning. Never use alcohol-based solutions or solutions containing surfactants.

### Dismantling and disposal

Dispose of the packaging and the device responsibly at the end of its life cycle, in compliance with the laws in force in the country where the product is used. The recyclable components are marked with the material symbol and ID.

THE DATA AND INFORMATION IN THIS MANUAL MAY BE CHANGED AT ANY TIME AND WITHOUT NOTICE.

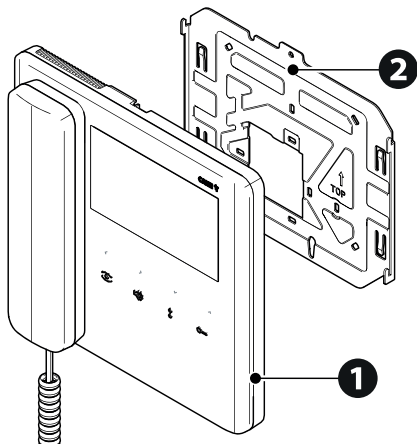
MEASUREMENTS ARE IN MILLIMETRES, UNLESS STATED OTHERWISE.

### DESCRIPTION

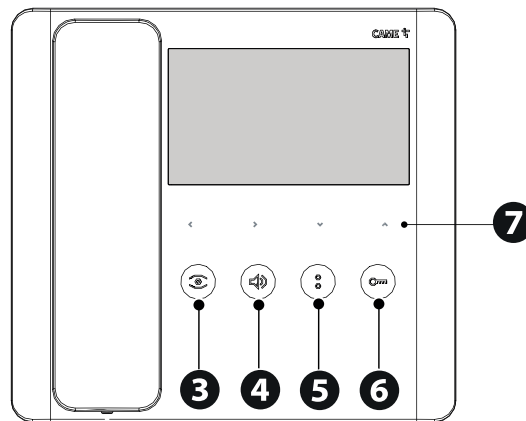
AGT V (840CF-0020) -Video intercom with handset, soft-touch keys, 5" LCD display, 1 programmable AUX key, white.

AGT V BF (840CF-0030) -Video intercom with handset, soft-touch keys, 5" LCD display, 1 programmable AUX key, white. Version with hearing-impaired function for hearing-aid users.

### Description of parts

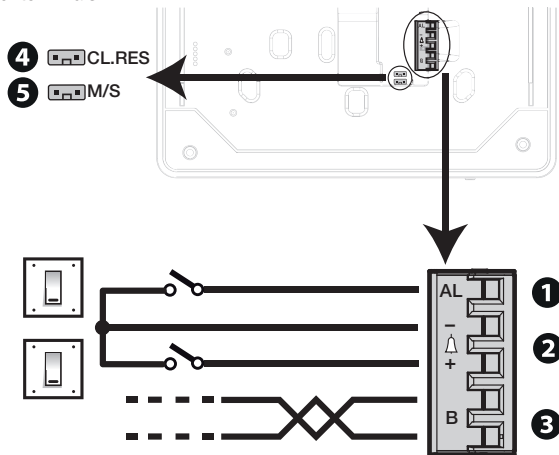


- 1 Internal receiver
- 2 Wall-mounting support
- 3 AUTOMATIC DOOR RELEASE function and video activation button
- 4 Audio settings button



- 5 AUX 2 and porter functions button
- 6 Open door and OPEN GATE function button
- 7 Buttons for adjusting the brightness, contrast and colour of the display.

## Function of terminals

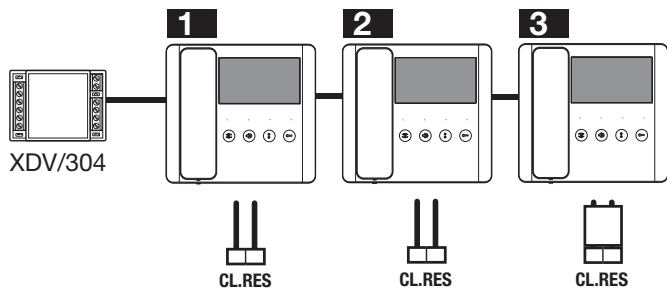


- ① Alarm input
- ② Landing call
- ③ BUS-line input
- ④ CL.RES closing resistance
- ⑤ MASTER/SLAVE selector (M/S)

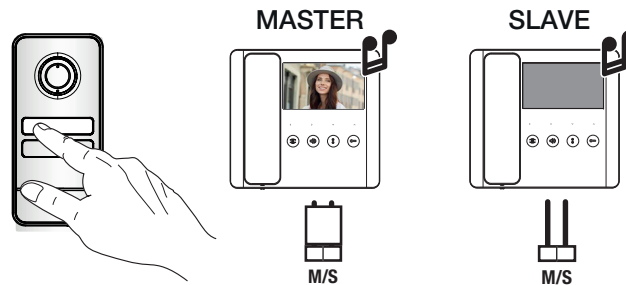
### CL.RES jumper settings

### M/S jumper settings





## CL.RES jumper settings



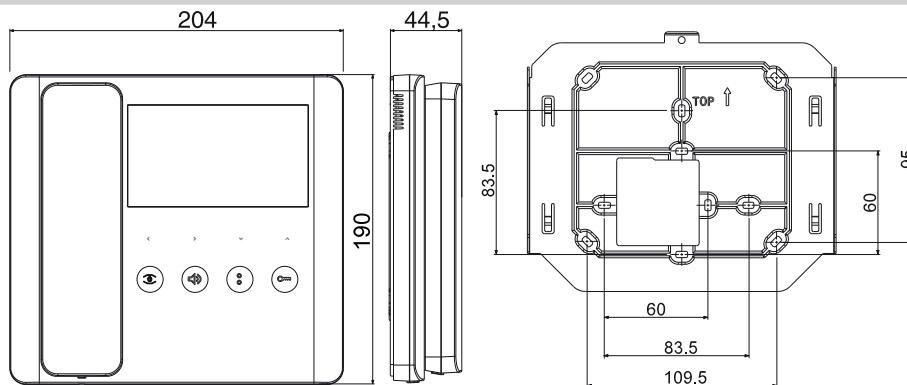
## M/S jumper settings



## LED status key

	FLASHING	ON	OFF
	Incoming call	Communication in progress AUTOMATIC DOOR RELEASE active Auto-connection in progress	AUTOMATIC DOOR RELEASE disabled
	Entering melody and call ring configuration mode	Ringtone volume off	
		The porter would like to be called back	
	Incoming call	Door or gate open	Door or gate closed

## Size



 The measurements, unless otherwise stated, are in millimetres.

## Technical data

MODELS	AGT V	AGT V BF
Protection rating (IP)	30	30
Operating temperature (°C)	+5 ÷ +40	+5 ÷ +40
Storage temperature (°C)	-25 ÷ +70	-25 ÷ +70
Size (mm)	204 x 190 x 44.5	204 x 190 x 44.5
Maximum consumption from BUS (mA)	175	175
Current draw in standby mode (mA)	<1	<1
Power supply from BUS (V DC)	15-20 DC	15-20 DC
Video standard	PAL/NTSC	PAL/NTSC
Material colour	White	White
Average life (hours)	150.000	150.000

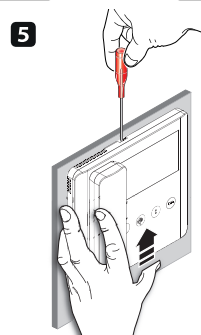
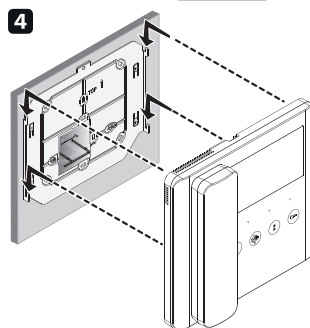
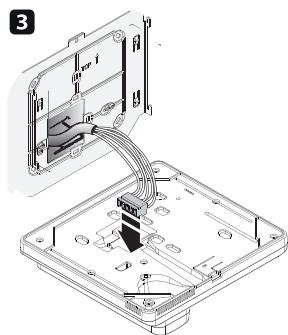
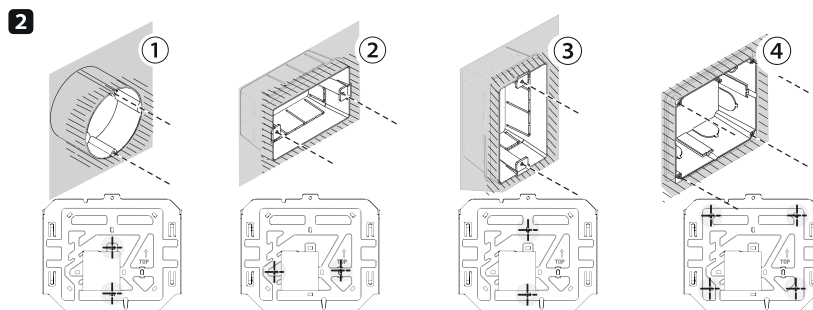
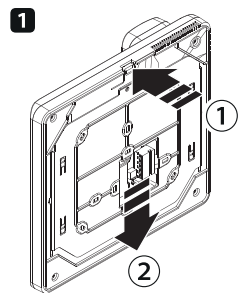
(\*) Before installing the product, keep it at room temperature where it has previously been stored or transported at a very high or very low temperature.

(\*\*) The average product life is a purely indicative estimate. It applies to compliant usage, installation and maintenance conditions. It is also influenced by other factors, such as climatic and environmental conditions.

## Installation

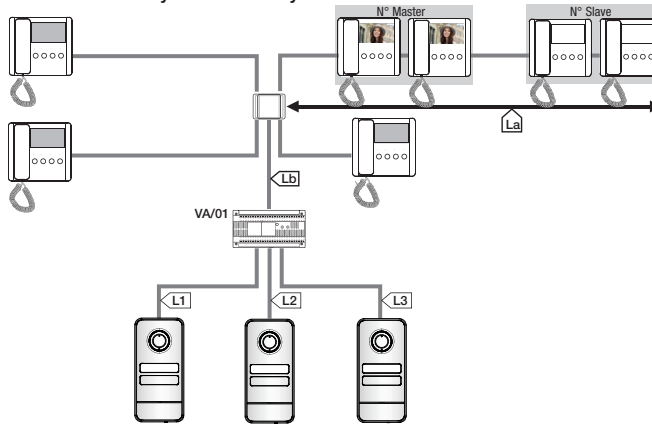
- 1 Press the small plastic tab and slide the device off the wall-mounting support to remove it.
- ⚠ **Observe the TOP arrow.**
- 2 Fasten the wall-mounting support to the back box.
- 📖 **Avoid overtightening the screws.**
- 3 Make the connections.
- 4 Refit the device to the wall-mounting support.
- 5 To unhook the device, use a screwdriver to press in the plastic tab and slide the device upwards.

- 1 Round back box (Ø 60 mm tube).
  - 2 Rectangular horizontal back box 503.
  - 3 Rectangular vertical back box 503.
  - 4 Ophera (PHI) back box.
- 📖 **The box must be installed at an appropriate height for the user.**



## Example set-up with VA/01

 The option to switch on 4 monitors at the same time is only available for systems with VA/01.



### Cable length

Section	Cable type
La, Lb	VCM/1D or UTP CAT5
L1, L2, L3	VCM/2D

Section	Max. section length (m)
La + Lb	100 VCM/1D or 60 UTP/CAT 5
L1 + L2 + L3	300
La + Lb + L1 (L2, L3)	150
La + Lb + L1 + L2 + L3	600

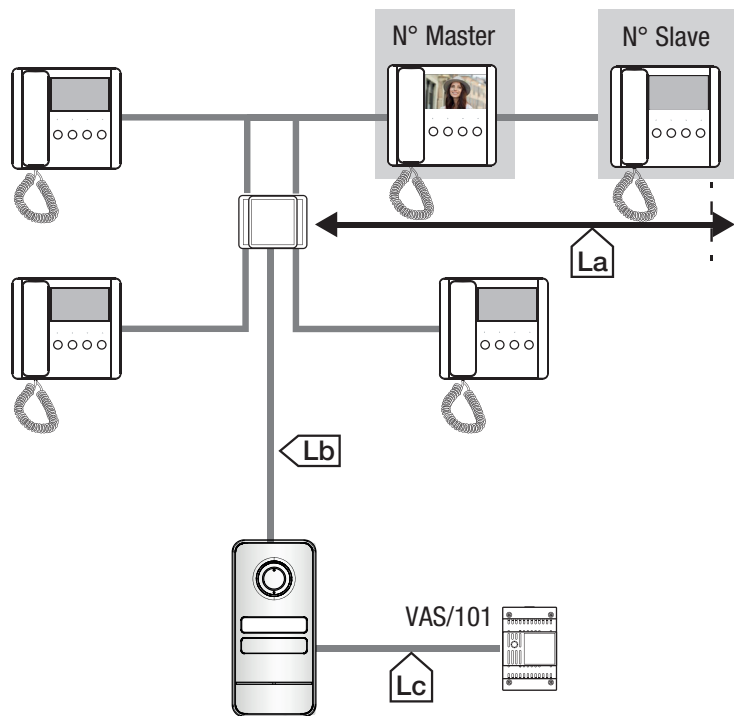
### Maximum number of internal receivers per cable type

		VCM/1D			
Master	4	3	2	1	
Slave	4	5	6	7	
		UTP CAT5			
Master	3	2	1		
Slave	0	6	7		



## Example set-up without VA/01

 The option to switch on 4 monitors at the same time is only available for systems with VA/01.



### Cable length

Section	Cable type
La, Lb	VCM/1D or UTP CAT5
Lc	2x1mm <sup>2</sup> or 2x2.5mm <sup>2</sup>

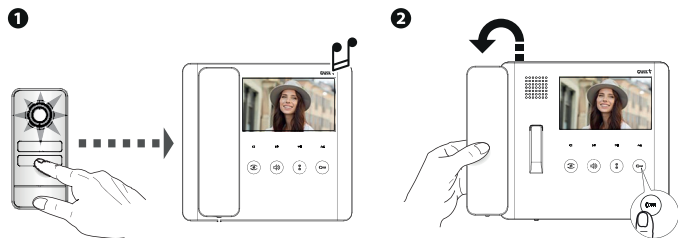
Section	Max. section length (m)
La + Lb	100
Lc	25 (2x1mm <sup>2</sup> ) or 60 (2x2.5mm <sup>2</sup> )
La + Lb + Lc	100


### Maximum number of internal receivers per cable type

		VCM/1D	
Master	3	2	1
Slave	0	3	7

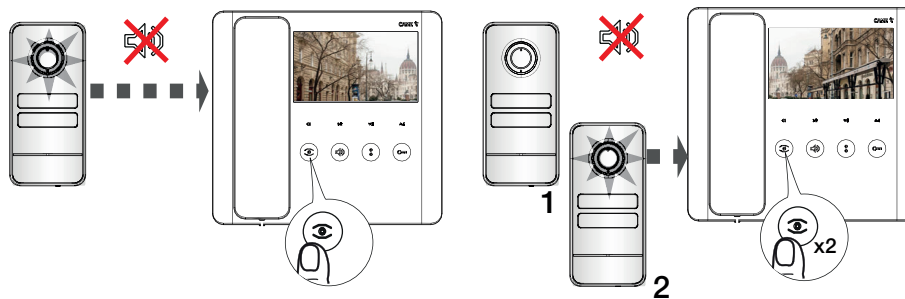
		UTP CAT5	
Master		1	
Slave		3	

## Communicating with the outside and DOOR RELEASE function



When the bell is pressed from the outside, the video receiver rings.  
 Pick up the handset to answer the call.  
 Press the  button to open the door.  
 Put the handset back on the hook to end the call.

## Video activation



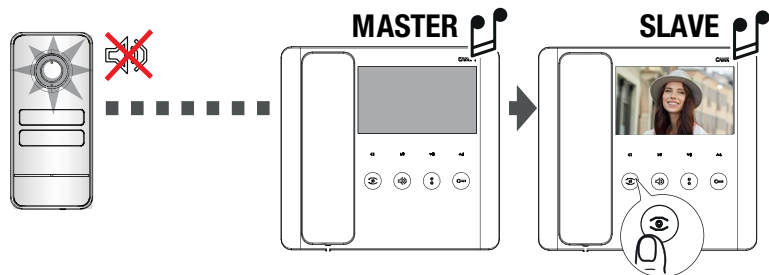
Press the  button to activate video communication with the outside.

Where there are multiple entry panels, keep pressing the  button to display all the entry panels in sequence.

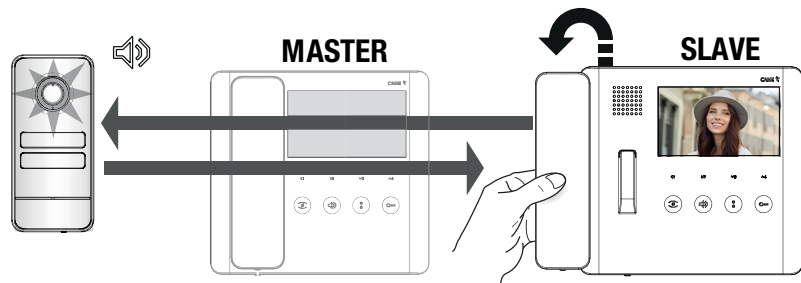
 If the line is busy, the video camera will not activate. If the line is busy, you will hear three consecutive beeps.



Where there are calls on more than one device, all devices will ring, but the video will only be activated on the video receivers configured as MASTER.




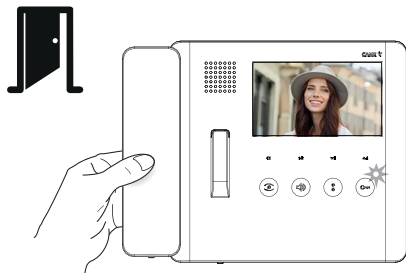
Press the  button on the SLAVE video receiver you would like to transfer the video to.




Pick up the handset on the SLAVE video receiver to activate audio communication.

## DOOR STATUS function

 The system must be correctly set up.

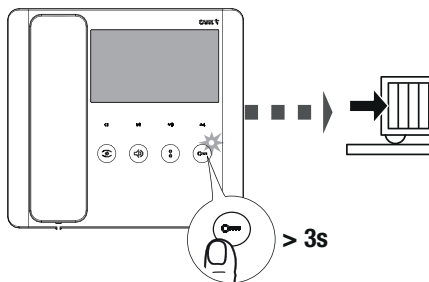



Use this function to view the current door status (open/closed) via the LED on the  button.

 The function is active during communication with the outside.


## ADVANCED FUNCTIONS


### OPEN GATE and GATE STATUS function



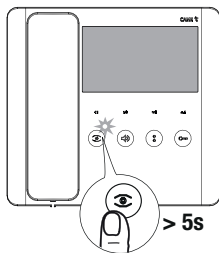
The open gate function is used to activate the open/close gate function and view the gate status (open/closed) via the LED on the  button.

 The function must be activated during system programming.

 The DOOR STATUS function is active by default. The OPEN GATE/GATE STATUS function must be correctly configured. The two functions cannot both be active at the same time.

Press and hold the  button for more than 3 seconds to send an open or close gate command.

## AUTOMATIC DOOR RELEASE function



This function allows you to automatically open the entrance when you ring the bell from the entry panel. Communication is not activated and the call ends automatically. It is recommended for professional practices.

**The function is available by default. It can be removed during system programming.**

Press and hold the button for more than 5 seconds to activate or deactivate the function.

**The LED switches on to indicate that the function is active.**

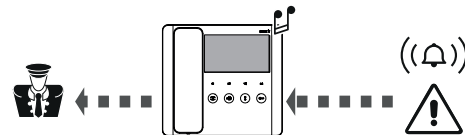
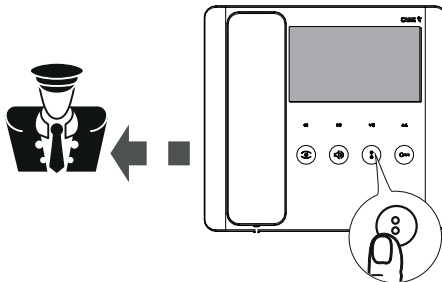
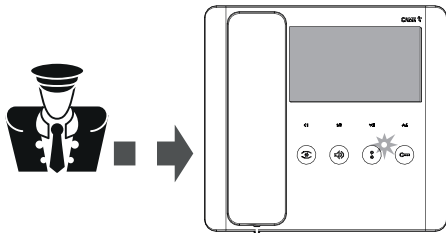
## Porter functions

These functions are only available where there is a porter's desk.

Call notification from the porter

Request for call to porter

Alarm contact



If the porter wishes to be called back, the LED turns on.

**The LED turns off when communication with the porter starts.**

Press the button to let the porter know that you want to be called back.

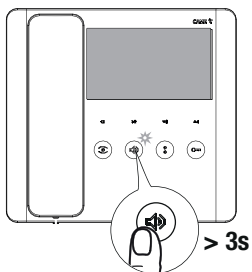
When the alarm contact is activated, an emergency signal is sent directly to the porter's desk.

**The video receiver will beep intermittently to signal activation.**

## Configuring melodies and call rings

 Perform the steps below in sequence.

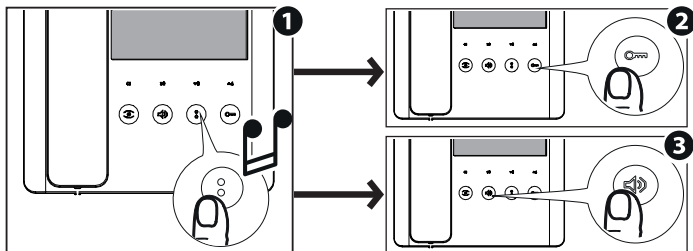
### Entering configuration mode









Press and hold the  button for at least 3 seconds.

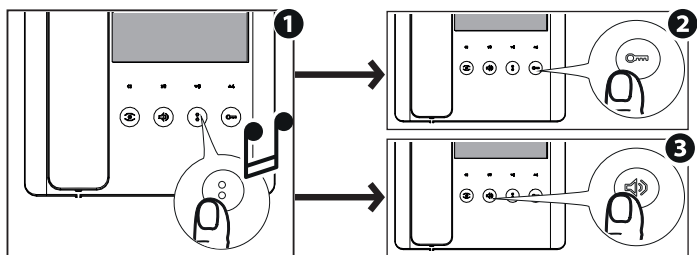
A short buzzing sound and a red flashing LED confirm that you have entered configuration mode.




### Configuring the melody associated with a call from the outside



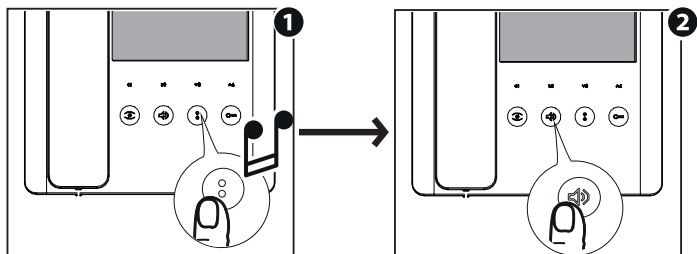
-  Press the  button to listen to the melodies in sequence.
-  Press the  button to select the melody and automatically move on to configuring the melody associated with the landing call.
-  Alternatively, press the  button to select the melody and exit programming.




## Configuring the melody associated with a landing call



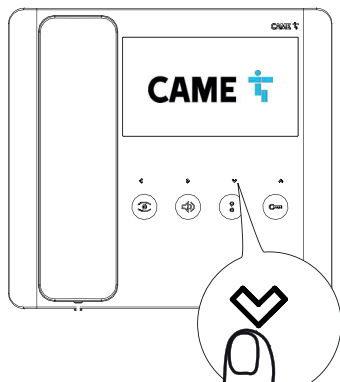
- 1 Press the  button to listen to the melodies in sequence.
- 2 Press the  button to select the melody and automatically move on to configuring the number of call rings.
- 3 Alternatively, press the  button to select the melody and exit programming.

## Configuring the number of call rings




- 1 Press the  button as many times as the number of rings you want (from 1 to 12 rings, depending on the chosen melody).  
 **Three seconds after the button was last pressed, the video receiver will simulate a call with the chosen number of rings.**
- 2 Press  to confirm your choice and exit configuration.

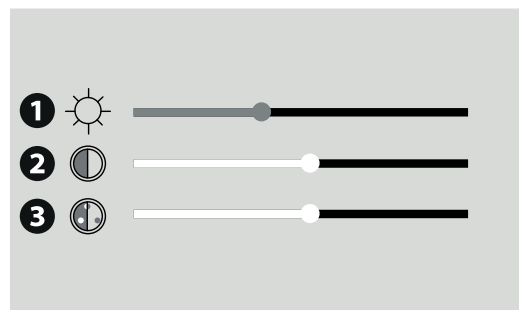
## Adjusting brightness, contrast and colour



With the video active, press any one of the following buttons: , ,  or  to view the video settings menu.

Use the  or  button to select one of the parameters.

Use the  or  button to increase/decrease the value of the selected parameter.



From this screen, you can view and change the video parameters.

- 1** Brightness
- 2** Contrast
- 3** Saturation

**CAME** 

[CAME.COM](http://CAME.COM)

### **CAME S.P.A.**

Via Martiri della Libertà, 15

31030 Dosson di Casier

Treviso – Italy

Tel. (+39) 0422 4940

Fax (+39) 0422 4941

[info@came.com](mailto:info@came.com) - [www.came.com](http://www.came.com)